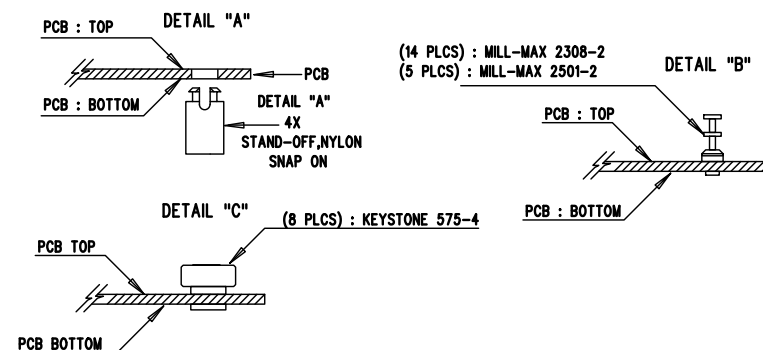


REVISION HISTORY				
ECO	REV	DESCRIPTION	APPR	DATE
-	2	PRODUCTION FAB	DAVID B.	06-23-11

NOTES: UNLESS OTHERWISE SPECIFIED

1. WORKMANSHIP SHALL BE IN ACCORDANCE WITH IPC-A-610.
2. ASSEMBLY PROCESS SHALL INCLUDE: REFLOW SOLDER TOP SIDE SMD. MAXIMUM SOLDER TEMPERATURE IS 240 DEGREES CELSIUS.
3. PARTS TO OMIT WILL BE SPECIFIED ON THE BILL OF MATERIALS. LOCATIONS OF OMITTED PARTS SHALL BE FREE OF SOLDER. MASK THE SOLDER STENCIL WHERE SMT PARTS ARE OMITTED.
4. INSTALL SHUNTS AS SHOWN ON ASSY DRAWING.
5. DEPANELIZE BOARDS AFTER ASSEMBLY AND ROUTE-OUT THE BREAKOUT TABS ON FOUR SIDES OF THE BOARD EDGE.
6. DO NOT APPLY ANY KIND OF ASSEMBLY STAMP OR QA STAMP TO ANY BOARD.
7. INSTALL TURRETS, STAND-OFFS AND BANANA JACKS AS SHOWN BELOW:



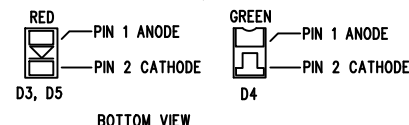
8. THERE ARE TWO ASSEMBLY VERSIONS FOR THIS DESIGN: -A AND -B PLEASE SEE BILL OF MATERIALS AND TABLE BELOW TO MARK EACH VERSION CORRECTLY BY BLACK PERMANENT MARKER.

*

ASSY	PROTECT CKT. FOR Q1	REG CKT.FOR Q2	JUMPER	Q2	Q4	ROFB2	RCX	CL	CBGATE
-A	LOADED	LOADED	NO INSTALL	SI7135DP	OPT	84.5k	10.0k	2.2uF	10nF
-B	NOT LOADED	NOT LOADED	INSTALL	LRC-LRZ-2010LF-R000	NO INSTALL	OPT	0 OHM	OPT	NO INSTALL

9. 3 PLACES; PLACE ADHESIVE TACK AT INDICATED LOCATIONS FOR JUMPER INSTALLATION.

10. INSTALL LED'S D3, D4 AND D5 AS SHOWN:



APPROVALS		LINEAR TECHNOLOGY	
PCB DES.	NC	1630 MCCARTHY BLVD MILPITAS, CA 95035 PH: (408)432-1900 www.linear.com LTC CONFIDENTIAL- FOR CUSTOMER USE ONLY	
APP ENG.	DAVID B.	TITLE: TOP ASSEMBLY DRAWING:	
		BATTERY CHARGER AND POWER MANAGEMENT BOARD	
		SIZE	IC NO. LTC4000EUF
		N/A	DEMO CIRCUIT 1830A-A/B
		SCALE = NONE	REV. 2
		FILENAME: DC1830A-2.PCB	SHT 1 of 2